



TOUCH RICH

ທຳ ກິດ



AIM HIGH

Charge Life Body and Spirit



*If you are looking for a perfect life experience with memories to cherish you are at the right place. Let's plan a reasonable life for you.*

# About Us

Since 1990,

**Touch Rich, a subsidiary of EON GROUP** started and operated a real estate consulting business. With the concept of housing development and tourism in line with our concept "Charge Life Body and Spirit".

## Conceptual Design of The Project: Out Standing Aim Center

To promote physical and mental health to be strong and happy. Our differences can be recognized physically and emotionally at Aim Center.

For health and accommodation that makes one feel refreshed, awaken and cheerful. With love for those who come to use our service or spend the night or even own assets that generate income by allowing guest to utilize that apart from the owner, or use it yourself, or share for rent to give happiness and pride of owning assets in Any Projects.

## We Operate business as a full-service consultant as follows:

- ❖ Conceptualization and preliminary design (Conceptual Design)
- ❖ Prepare a complete master plan
- ❖ Implementation of the master plan to complete the project





# *Our Vision*

Weave Thai real estate routes

Aim High creates an Aim Project for housing and relaxation, both physically and mentally, that the whole world dreams of staying and owning.

# *Mission Statement*

Brave steps for the future

**Touch Rich and AIM HIGH**, a subsidiary of the **EON GROUP**, is committed to developing the client's land and real estate in the most profitable manner for the highest customer satisfaction. and create jobs and income for the community.

Under the brand "Aim" products that people all over the world want either a product or a service and enjoy a profit back to society.

Our First goal is to contribute one baht of every 100 baht profit to the society. We are looking at 1Brillion baht in Real time, Real rich, Real wealth.




# Chairman's Message

With our vision and experience, AIM HIGH will be number one in the world with the concept of housing and tourism development based on the concept of "Charge Life Body and Spirit".

Welcome to the AIM Family for your new Business lifestyle.

---

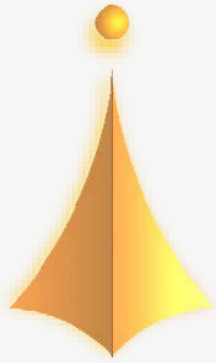
  
(Pannee Musigamul)  
*Superman.*

**Ms. Pannee Musigamul**

AIM HIGH

Co-Founder / Chairman





**AIM HIGH**

Charge Life Body and Spirit

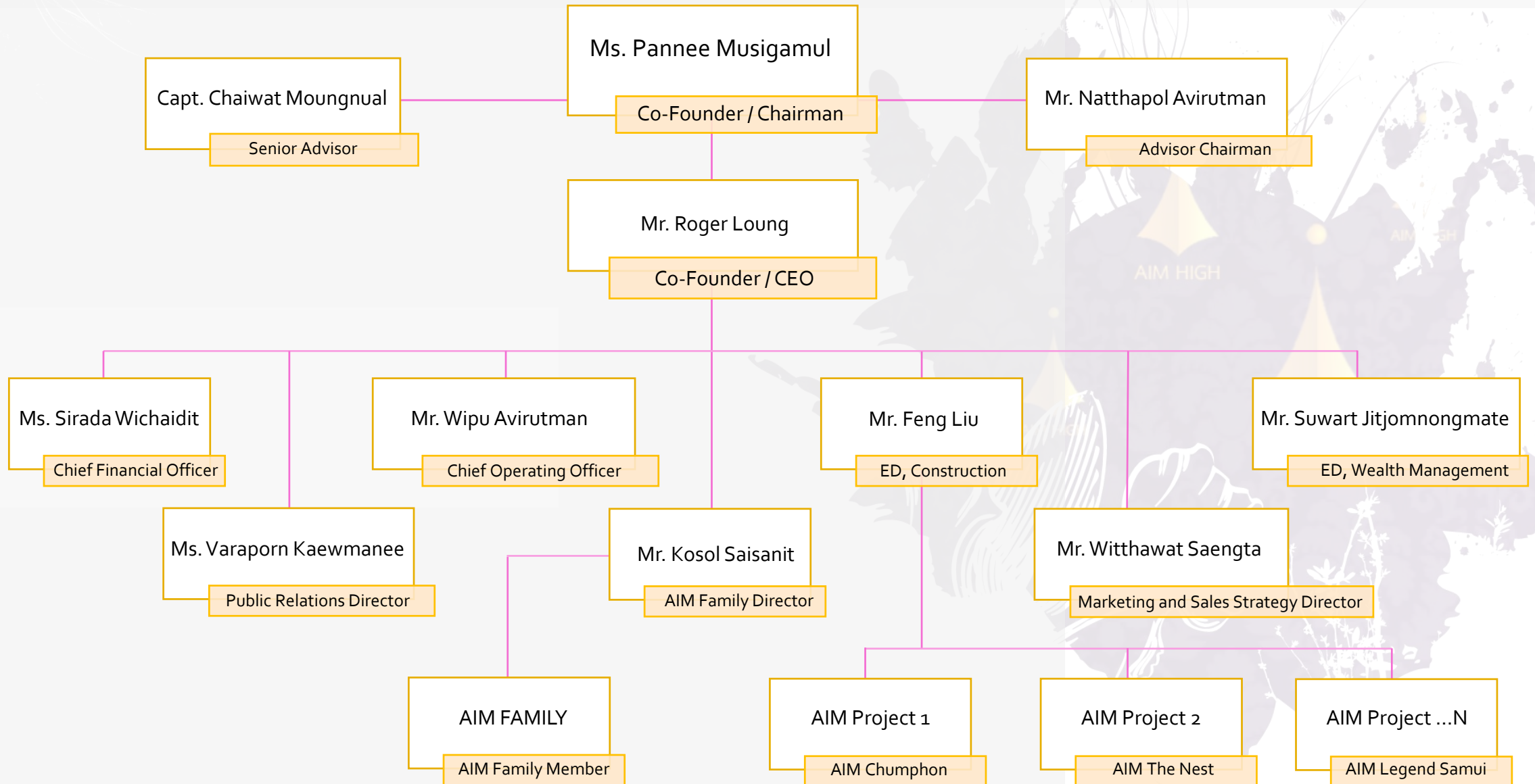
---

# Know More About *Our Team*

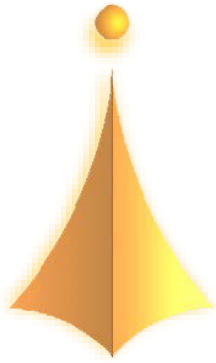
Aim High management team created the Aim Project for the physical and mental living and relaxation that the world dreams of living and owning.



# AIM HIGH GROUP's Organizational Structure







**AIM HIGH**

Charge Life Body and Spirit

# About AIM HIGH

## *Business Concept*

Housing that people of Thailand and the world need. Focus on 3 segments of the target group, every segment has...



# Get to know Aim Project

Housing that people of Thailand and the world need. Focus on 3 segments of the target group, every segment has...

- » There is a center charge life to take care of the body and Spirit.
- » When free from residence It is reused in the form of Aim Fam (Member) with Wealth return management.
- » Preserving nature, culture, love, warmth, giving.

## The 3 segments of AIM Project.

1. Rich Point, price is a multi-purpose residence, cheap, good, complete.  
Under the full external elements of living, working, family business, perfectly generating income
  - ❖ business
  - ❖ Live
  - ❖ Rest
  - ❖ Family
  - ❖ accepting customers
  - ❖ create pride
  - ❖ A variety of circulating
  - ❖ warm
2. Wealth Point
  - ❖ smile and rest
3. Unique
  - ❖ different like no other personal privilege



# Get to know Aim Project

## what have been

- » Accommodation.
- » Income that is vacant from residence.

## Highlights of Aim Project

- » The design will look at the nature of nature, Highlights of that plot of land.
- » By clearly defining the focus on the target customer group.
- » Uniqueness.
- » Have privacy as if on the comfort like staying at a hotel.

## Aim Project Benefits

- » Living, changing the atmosphere in many ways Many levels in the Aim family together.
- » Welcoming customers People who are important to the family in a proportional and harmonious way.
- » Warmth at work, rest, and live in proportion.

## Competitors

- » almost none because it is a new brand that thinks of all systems in all aspects of housing, suitable for a particular group.

# Get to know Aim Project

## Uniqueness

- » Design that suits the needs of each group.
- » Unique services for each segment.
- » have a regular income from real estate.
- » Take pride in owning.
- » Enhancing the health of oneself and family members, customers, loved ones, friends.

## Aim Resources

- » Professional Management Specialist.
- » Health Nutrition Specialist.
- » Service, waiter, security guard.
- » etc.



TOUCH RICH

ทัช รัช

Charge Life Body and Spirit

---

# TOUCH RICH

## *Project Reference*

If you are looking for a perfect life experience with memories to cherish you are at the right place. Let's plan a reasonable life for you.



# Touch Rich Projects Reference

## Project Name

### » Phuket Park View

- Conceptual design and preliminary design (Conceptual Design) on the land of 60 rai of Khun Wirat Issarapitakkul
- Create value for the land from 1.8 million baht to 10 million baht by selling the land with the aforementioned concept to Phuket Parkville Co., Ltd.
- Implementation of the master plan until the project is completed and can generate profits for Phuket Parkville Company Limited in the amount of more than 40 million baht

## Photo Reference





# Touch Rich Projects Reference

## Project Name

### » Phuket Villa

- Conceptualization and initial design (Conceptual Design) On a plot of 100 rai of land belonging to the Nganthawee family.
- Sell land with ideas to Khun Paiboon Upatising of Phuket Villa Company Limited until the extension of the projects of Phuket Villa Company Limited to be listed on the stock exchange at present

## Photo Reference



# Touch Rich Projects Reference

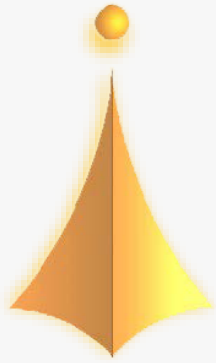
## Project Name

- » Projects Thai KoKo, Phuket Province
  - Laying concepts and preliminary design (Conceptual Design) on a plot of land of 60 rai from agricultural land to be a residence
- » Projects Chok Anan Gem Project, Phitsanulok Province
  - Prepare a complete master plan and operate according to the master plan Until the project was completed, it was given to Khun Prasut Prasarttong-Osoth and Khun Ampai Thanavisut.
- » Projects under The Regent Group
  - Conceptualization and preliminary design (Conceptual Design) for land owners. Koh Samui, Surat Thani Province, on a land plot of 40 rai.
  - Sell the land with the concept to Talaywan Company Limited of the Kingdom of Khun Charoen Siriwattanaphakdee (Chang Beer)

## Other works

- » Conceptualization and preliminary design (Conceptual Design) including the preparation of a complete master plan On the land of Soi Ekamai and sold to Khun Wichai Wachiraphong (Sia Yak)
- » Conceptualization and initial design (Conceptual Design), including preparing a complete master plan on 1,000 rai of land along the Kok River, Chiang Rai Province, and sold to TCC Land Company Limited (Chang Beer).





**AIM HIGH**  
Charge Life Body and Spirit

---

# AIM HIGH

## *Project Reference*

If you are looking for a perfect life experience with memories to cherish you are at the right place. Let's plan a reasonable life for you.





# AIM HIGH Projects Reference

## Project Name

### » AIM I Chumphon Project, Land Development, Chumphon Province

- Contracted with Touch Rich Company Limited as a project consultant and development planner to AIM HIGH concept on a land plot of 11 Rai.
- Wealth Point Segment.

## Photo Reference





# AIM HIGH Projects Reference

## Project Name

» **AIM THE NEST Project**, Land Development, Prachuap Khiri Khan Province

- Contracted with Touch Rich Company Limited as a project consultant and development planner to AIM HIGH concept on a land plot of 11 Rai.
- Wealth Point Segment.



## Photo Reference





# AIM HIGH Projects Reference

## Project Name

- » **AIM Rich Point Condo**, Land Development, Bang Bua Thong District, Nonthaburi Province
  - Contracted with Touch Rich Company Limited as a project consultant and development planner to Khun Sangamchit Sukhin on a land plot of 3 Rai.
  - Rich Point Segment.



## Photo Reference



# AIM HIGH Projects Reference

## Project Name

» **Rich Point Hotel Project, Land Development, Koh Samui, Surat Thani Province**

- Contracted with Touch Rich Company Limited as a project consultant and development planner to AIM HIGH on a land plot of 1 Rai.
- Rich Point Segment.



## Photo Reference





# AIM HIGH Projects Reference

## Project Name

» **AIM HERB Project, Land Development, Kanchanaburi Province**

- Contracted with Touch Rich Company Limited as a project consultant and development planner to AIM HIGH concept on a land plot of 37 Rai.
- Unique Segment.

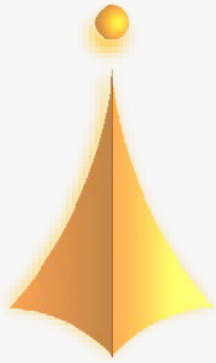


## Photo Reference









**AIM HIGH**  
Charge Life Body and Spirit

---

# AIM HIGH

## *Joint Venture Projects*

If you are looking for a perfect life experience with memories to cherish you are at the right place. Let's plan a reasonable life for you.



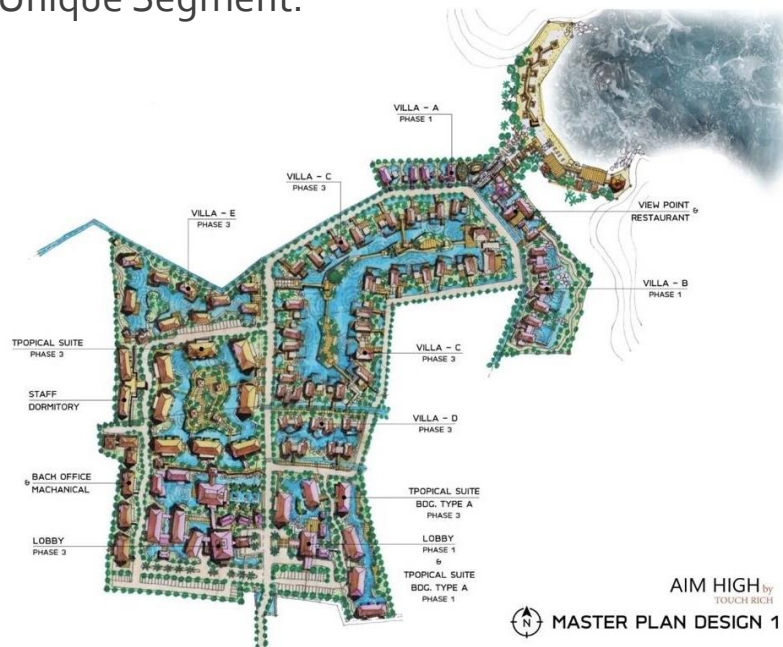


# AIM HIGH Joint Venture Projects

## Project Name

» AIM AVATAR Project, Land Development, Nakhon Si Thammarat Province

- Contracted with Touch Rich Company Limited as a project consultant and development planner to AIM HIGH concept on a land plot of 217 Rai.
- Unique Segment.



## Photo Reference



# AIM HIGH Projects Reference

## Project Estimate

### » AIM AVATAR Project

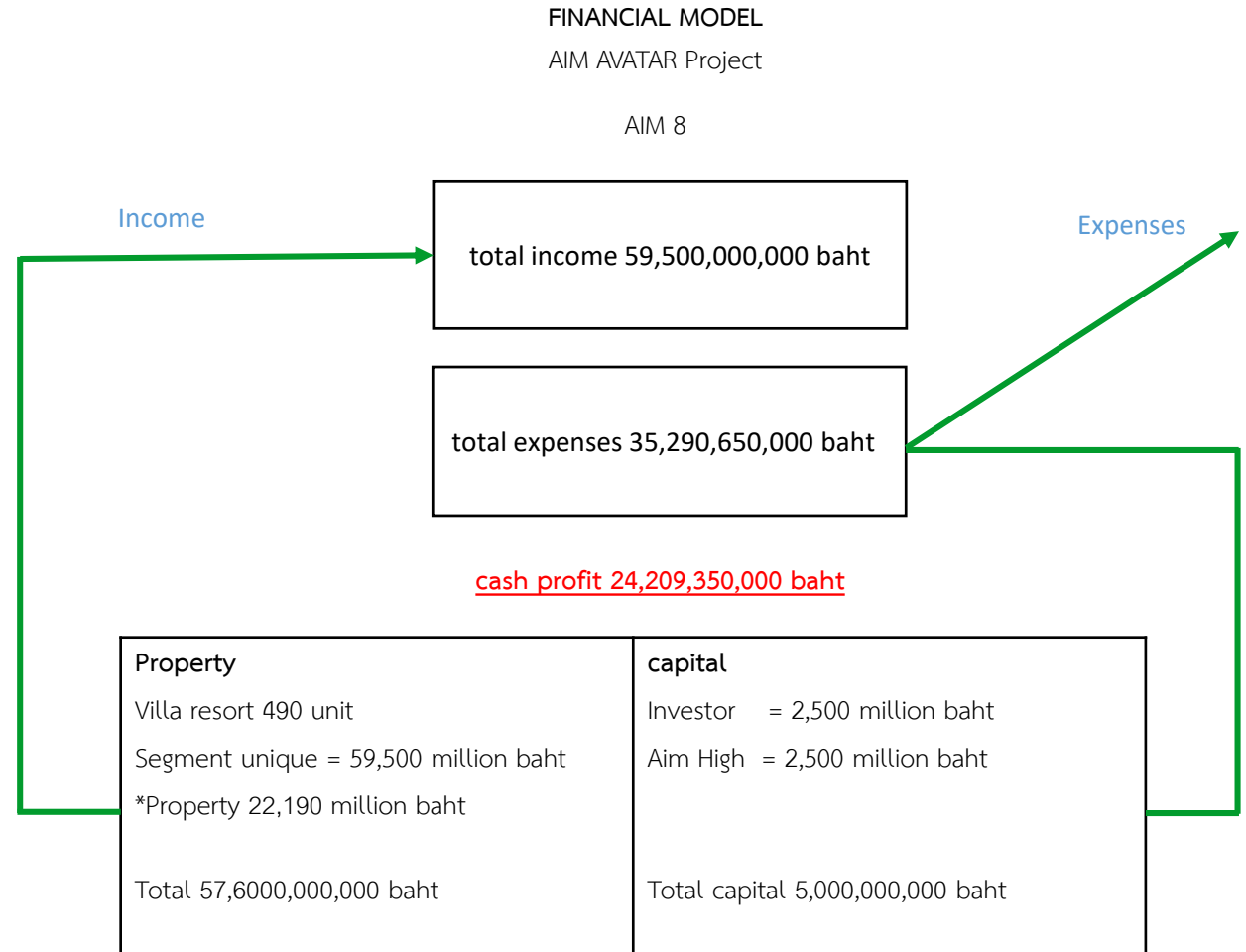
- Construction project on an area of 217 rai
- Construction Project duration 36 months

### » Project Value

- Property 57.60 Billion Baht
- Capital 5.00 Billion Baht

ROI  $\frac{24,209,350,000}{5,000,000,000} \times 100 = 484\%$

ROA  $\frac{22,190,000,000}{5,000,000,000} \times 100 = 444\%$





# AIM HIGH Joint Venture Projects

## Project Name

» **AIM Maha Ches Project, Land Development, Nonthaburi Province**

- Contracted with Touch Rich Company Limited as a project consultant and development planner to AIM HIGH concept on a land plot of 11 Rai.
- Unique Segment.

## Photo Reference



# AIM HIGH Projects Reference

## Project Estimate

### » AIM Maha Ches Project

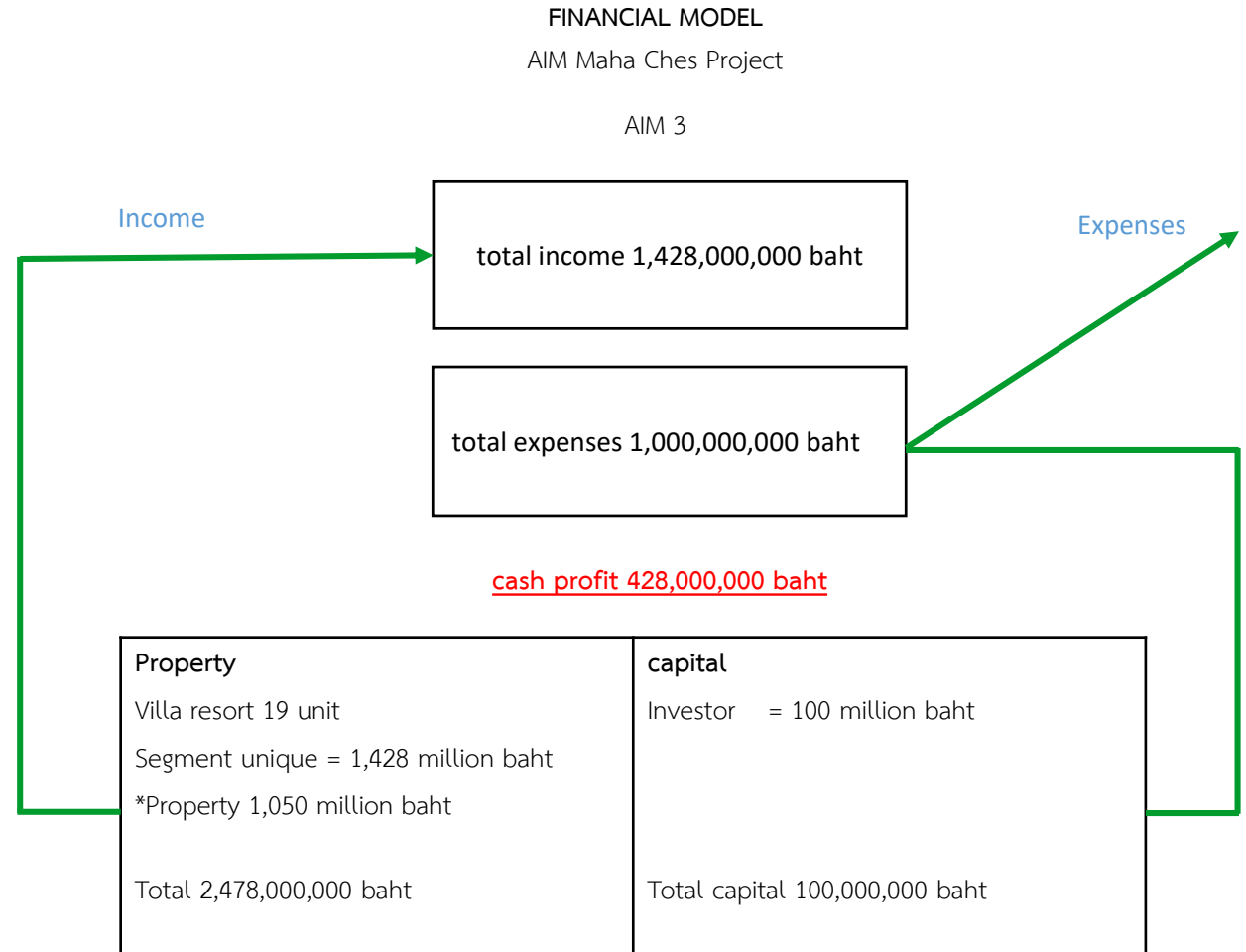
- Construction project on an area of 11 rai
- Construction Project duration 30 months

### » Project Value

- Property 2.47 Billion Baht
- Capital 0.10 Billion Baht

ROI  $\frac{428,000,000 \times 100}{100,000,000} = 428\%$

ROA  $\frac{1,050,000,000 \times 100}{100,000,000} = 1,050\%$





# AIM HIGH Joint Venture Projects

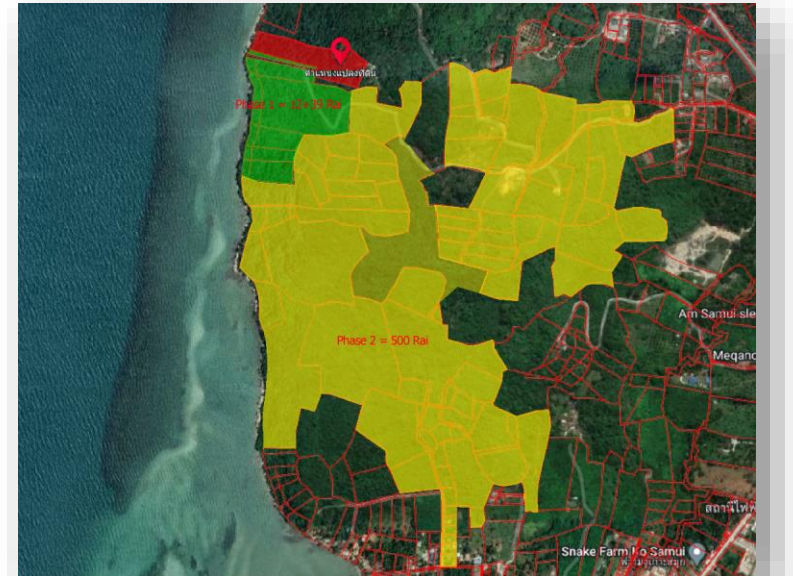
## Project Name

» **AIM Legend Samui**, Land Development, Koh Samui, Surat Thani Province

- Contracted with Touch Rich Company Limited as a project consultant and development planner to AIM HIGH concept on a land plot of 500 Rai.
- Unique Segment.



## Photo Reference



# AIM HIGH Projects Reference

## Project Estimate

### » AIM Legend Samui Project

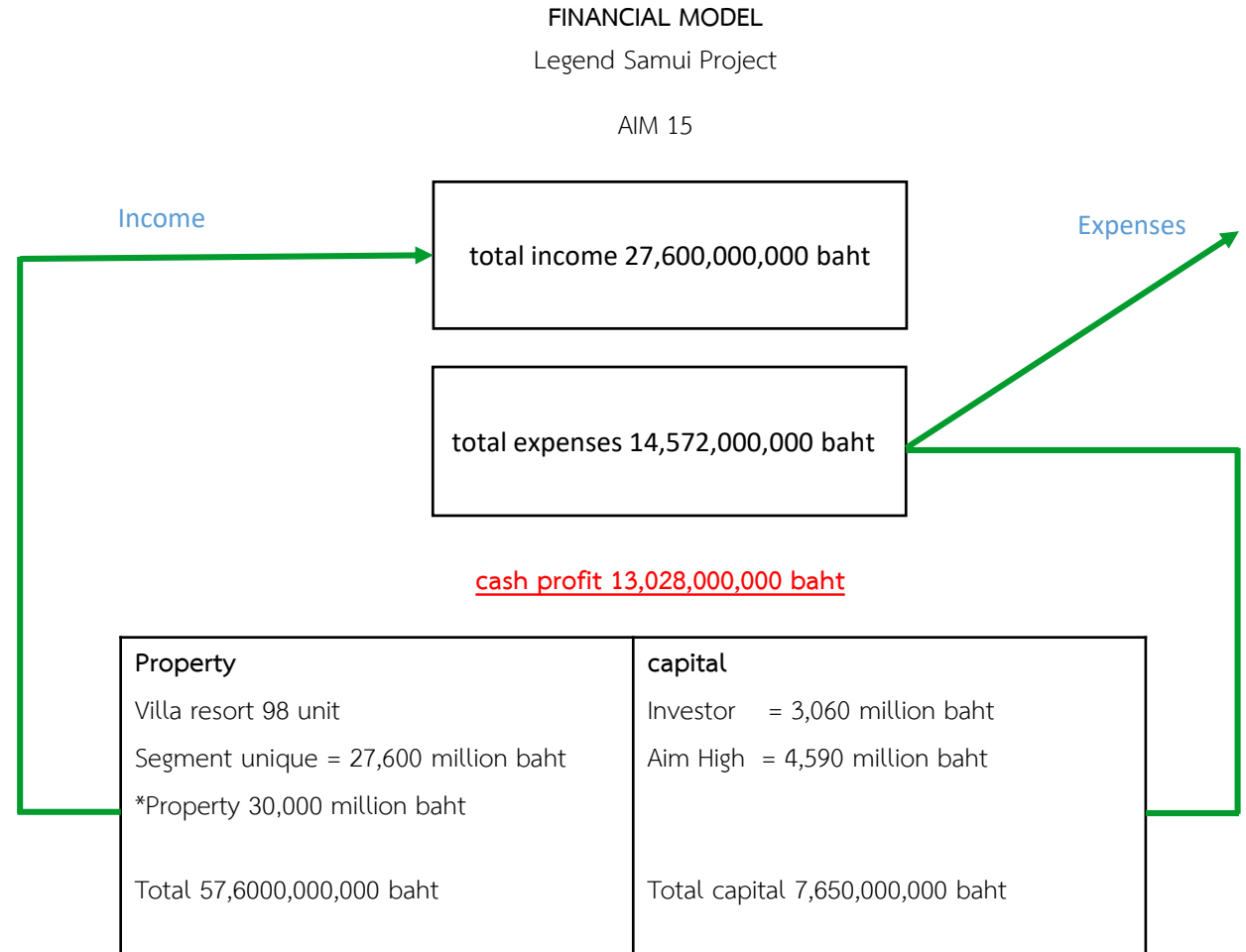
- Construction project on an area of 500 rai
- Construction Project duration 36 months

### » Project Value

- Property 57.60 Billion Baht
- Capital 7.65 Billion Baht

ROI  $\frac{13,028,000,000 \times 100}{7,650,000,000} = 170\%$

ROA  $\frac{30,000,000,000 \times 100}{7,650,000,000} = 392\%$





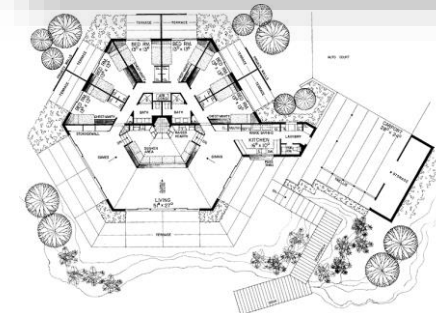
# AIM HIGH Joint Venture Projects

## Project Name

» AIM Baan Sathorn, Land Development, Sathorn-Kalapapruek, Bangkok Province

- Contracted with Touch Rich Company Limited as a project consultant and development planner to AIM HIGH concept on a land plot of 61 Rai.
- Unique Segment.

## Photo Reference



# AIM HIGH Projects Reference

## Project Estimate

### » AIM Baan Sathorn Project

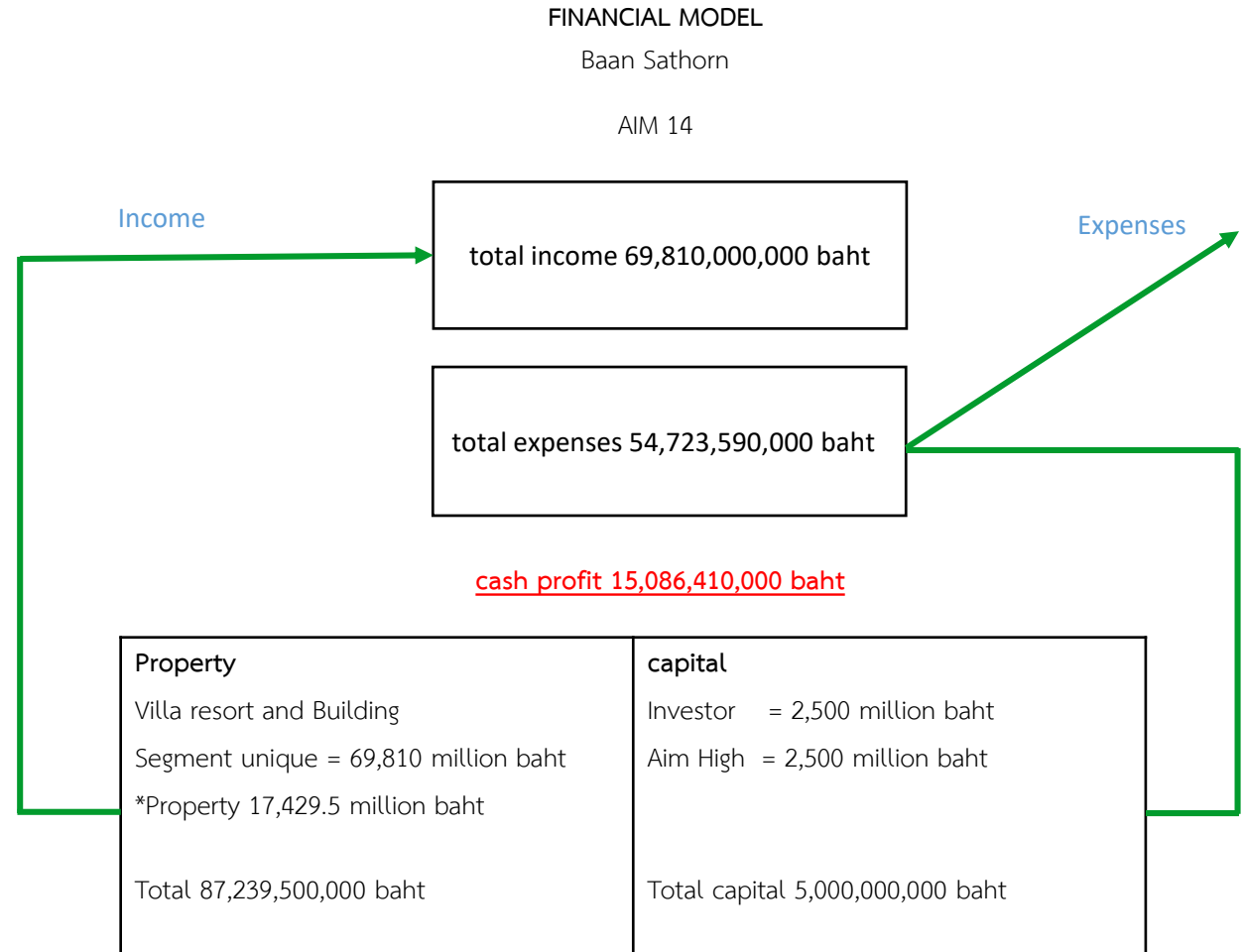
- Construction project on an area of 61 rai
- Construction Project duration 36 months

### » Project Value

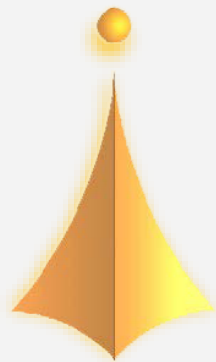
- Property 87.23 Billion Baht
- Capital 5.00 Billion Baht

$$\text{ROI} = \frac{15,086,410,000}{5,000,000,000} \times 100 = 310\%$$

$$\text{ROA} = \frac{17,429,500,000}{5,000,000,000} \times 100 = 392\%$$








**AIM HIGH**


Charge Life Body and Spirit

---

*Thank You*

 EON GROUP | [www.eon-group.com](http://www.eon-group.com)

 +66 (2) 899 2400

 [info@aimhigh-group.com](mailto:info@aimhigh-group.com)

 [www.aimhigh-group.com](http://www.aimhigh-group.com)

